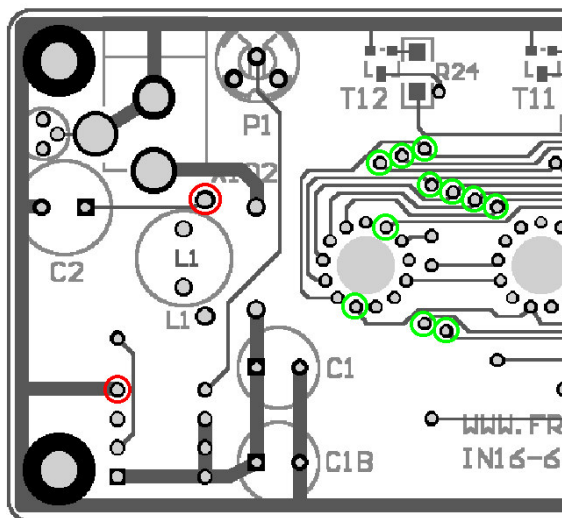


IN16-6-V1 Anti Ghosting Modification

Some clock owners reported 'ghosting' of the tubes, which occurs when the high voltage is adjusted above 142 volts. It can indeed be desirable to set the voltage higher than 142V to increase the brightness. With this modification you can set the voltage and brightness as high as you want without any ghosting effects. Increased brightness reduces the lifetime of the tubes, so it is up to yourself how much lifetime you want to trade for extra brightness.

You can modify the circuit by adding some diodes and resistors. These parts are not very expensive and can be bought locally. If need be, I can supply them.

You need 11 diodes (1N4148 or 1N914) and 2 resistors (47k, 1/4watt). All parts go on the bottom. Most of the parts can be inserted in existing free holes. Here is a drawing of the bottom of the board and a picture of how it can be done:



Mount the two 47K resistors in the red marked holes. Mount the 11 diodes in the green marked holes, the anode sides go into the hole. Bend all the ends that face up and connect them together. Keep it all as low as possible, so that when everything is put back together again, you don't create any shorts against the steel bottom plate. That's it folks! Enjoy!